

Laurel Meadows Stream Restoration

A backyard stream, but *better*.

Destiny Macon

Greenville County

Dmacon@GreenvilleCounty.org



Zach Smoot

Woolpert

Zach.Smoot@Woolpert.com



Agenda

- ▶ How did we get here?
- ▶ Grant Funding
- ▶ What exactly is a stream restoration?
- ▶ Where is this stream?
- ▶ What does this mean for me?
- ▶ Pros and Cons



How did we get here?

Simple.

Greenville County wants healthy streams.

Healthy Streams mean:

- ▶ Water safe for contact:
 - ▶ For Wading
 - ▶ For Swimming
 - ▶ For Kids Playing
- ▶ Stability
 - ▶ Lower risk to property and infrastructure
 - ▶ Less sediment instream
- ▶ Thriving Ecology
 - ▶ Healthy populations of bugs
 - ▶ Native vegetation
 - ▶ Thriving populations of fish

A Reedy “Report Card”



Impairments

Biology
Bacteria
Excess Nutrients



Causes

Urbanization
Fertilizer
Agriculture
Sanitary Sewer
Wildlife
Private landuse



Potential County-led solutions

Stream Buffers
Stream
Restoration
Runoff Reduction
Runoff Treatment



Improving a 200-mile Watershed: A Tall Order

- ▶ Historically, the Reedy River has been abused.
- ▶ Since at least 2002, Greenville County has worked to change that:
 - ▶ Provided more regulation and oversight for construction.
 - ▶ Implemented and maintained a river monitoring network.
 - ▶ Provided guidance for designer and engineers to encourage more nature-based solutions.
 - ▶ Performed stream restorations and implemented Stormwater BMPs with a focus on water quality.
 - ▶ Pursued and won \$11.5M in grants to speed up implementation of stream restoration and stormwater BMPs in the Reedy River Watershed.



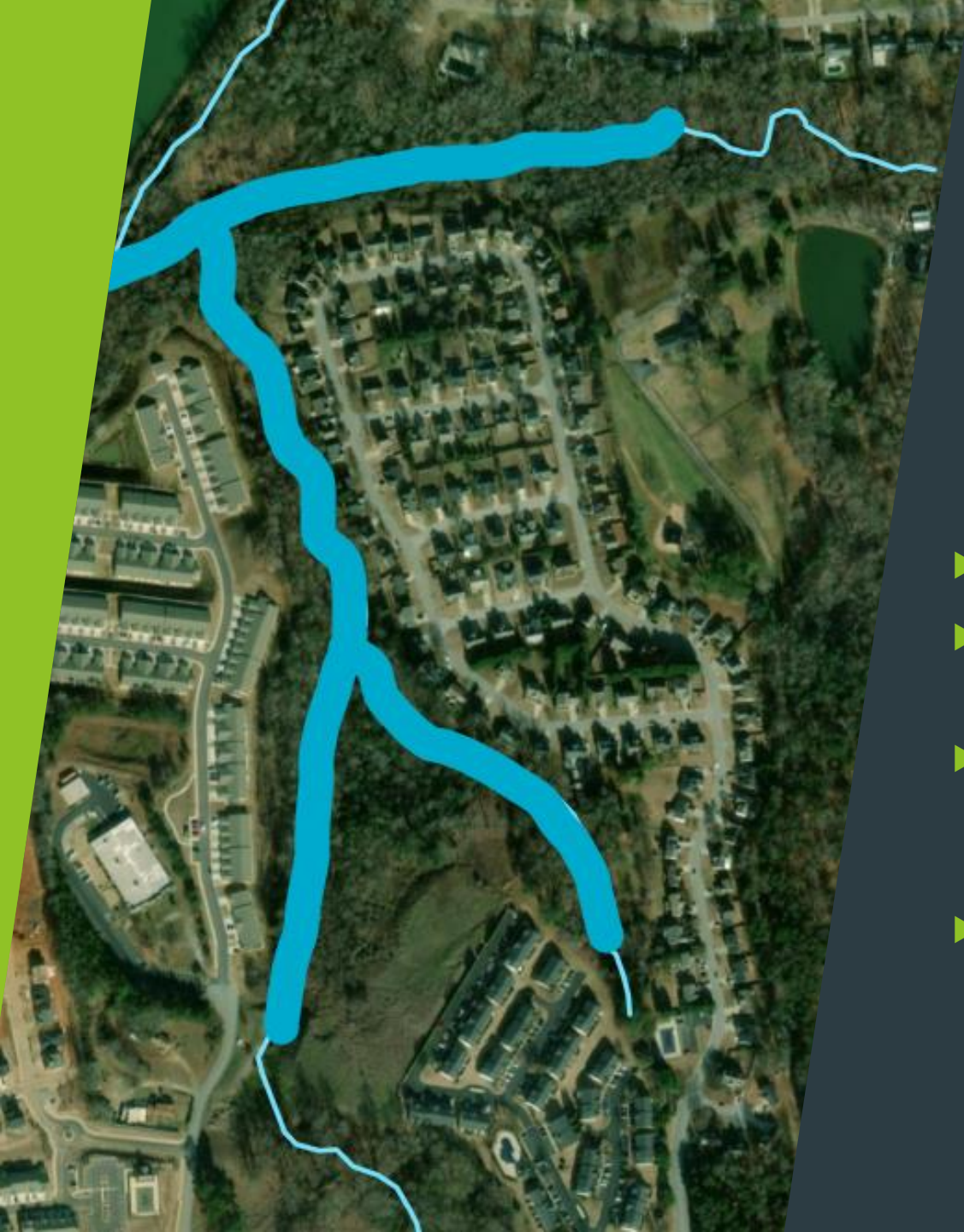
A.R.P.A.

What exactly is a stream restoration?

- ▶ Goals of stream restoration include
 - ▶ A stable stream (Less erosion)
 - ▶ A functional stream (the stream does what it's supposed to)
 - ▶ Lower risk (loss due to failing banks, falling trees, decreased risk for infrastructure loss)
 - ▶ Improved ecosystem
 - ▶ Improved Aesthetics (a healthy or restored stream just *looks* good!)

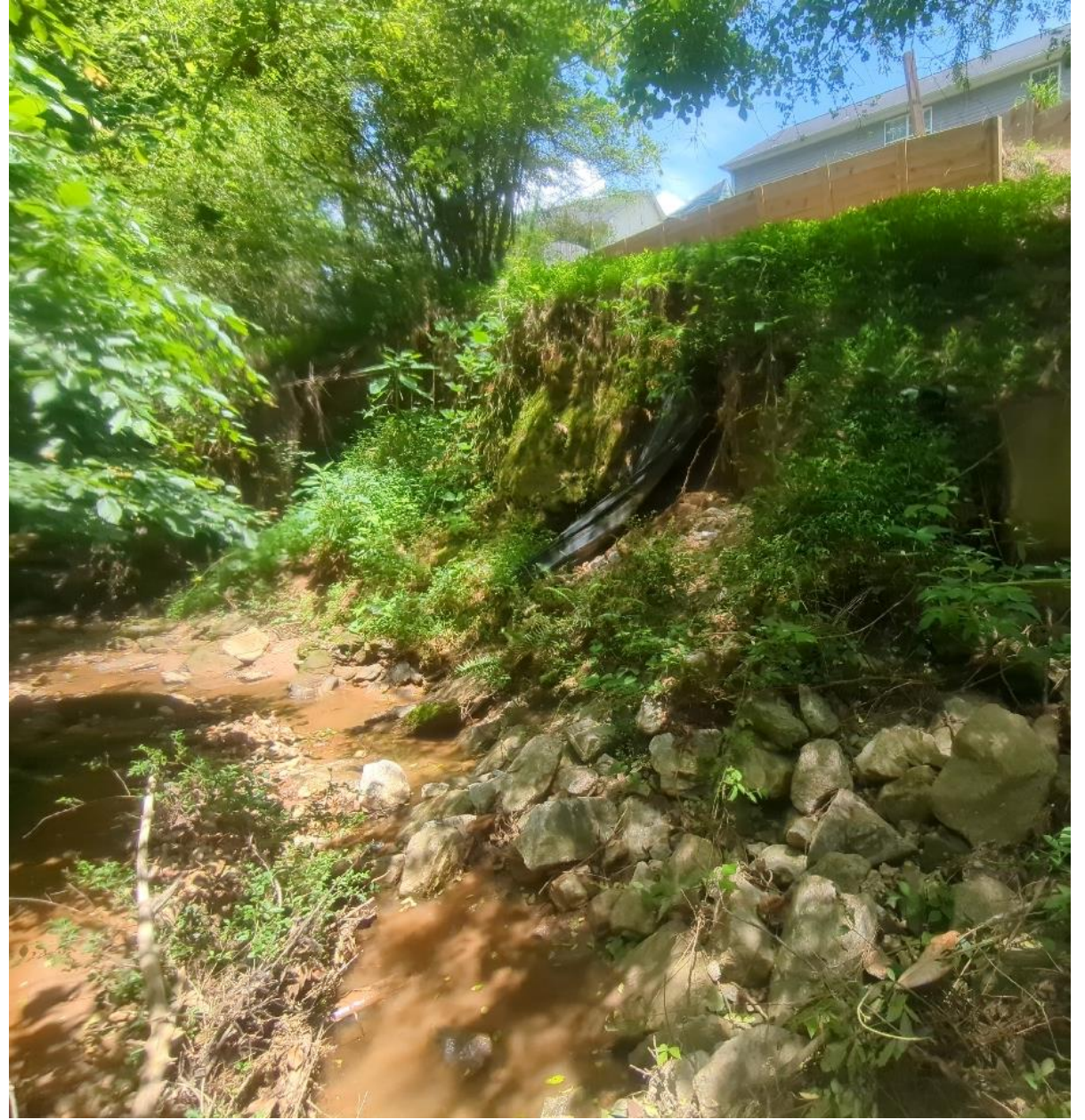






What we're proposing: A Stream Restoration in your backyard.

- ▶ Multiple smaller streams
- ▶ Up to 4,000 linear feet of stream overall
- ▶ Immediately adjacent to approximately 17 properties along Laurel Meadows Pkwy (536-812)
- ▶ Includes some HOA property





An aerial photograph of a river system with several meanders and oxbow lakes. The river is highlighted with yellow outlines, showing its path through a landscape of agricultural fields and some urban areas. The background is a white slide with green geometric shapes on the right side.

What does this mean for me?

- ▶ A stable, well-functioning stream means
 - ▶ Lower risk property erosion
 - ▶ Lower risk of infrastructure failures
 - ▶ A prettier backyard
 - ▶ Some stream features/strategies may create the sound of flowing water/waterfall

Pros and Cons

- ▶ Cons:
 - ▶ Some construction noise during working hours
 - ▶ Some exposed soil along the stream for a short period of time
- ▶ Pros:
 - ▶ No construction equipment on your property.
 - ▶ Less risk of erosion along your property
 - ▶ Continued maintenance of the project after construction.
 - ▶ A maintained, natural and healthy stream in your back yard.

This is a win-win!



Thank you
Questions?

